

Anti-STEAP2 hlgG1 Reference Antibody (AZD0754)

Product Information

Product Name	Anti-STEAP2 hlgG1 Reference Antibody (AZD0754)
Storage temp.	Store at 2-8°C short term (1-2 weeks).Store at ≤ -20°C long term. Avoid repeated freeze-thaw.
Catalog# / Size	GM-87756MAB-1mg / 1 mg GM-87756MAB-5mg / 5 mg GM-87756MAB-25mg / 25 mg GM-87756MAB-50mg / 50 mg GM-87756MAB-100mg / 100 mg

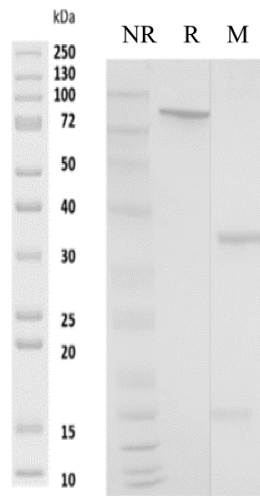
Antibody Information

Expression System	CHO
Aggregation	< 5% as determined by SEC-HPLC
Purity	> 95% as determined by SDS-PAGE
Endotoxin	< 1 EU/mg, determined by LAL gel clotting assay
Sterility	0.2 μm Filtered
Target	STEAP2
Clone	AZD0754
Alternative Names	IPCA1, PCANAP1, PUMPCn, STAMP1, STMP
Source/Isotype	Human IgG1 D356E/L358M, Kappa
Application	Flow cytometry
Description	This gene is a member of the STEAP family and encodes a multi-pass membrane protein that localizes to the Golgi complex, the plasma membrane, and the vesicular tubular structures in the cytosol. A highly similar protein in mouse has both ferrireductase and cupric reductase activity, and stimulates the cellular uptake of both iron and copper in vitro. Increased transcriptional expression of the human gene is associated with prostate cancer progression. Alternate transcriptional splice variants, encoding different isoforms, have been characterized.
Formulation	phosphate-buffered solution, pH 7.4.

Version:3.2

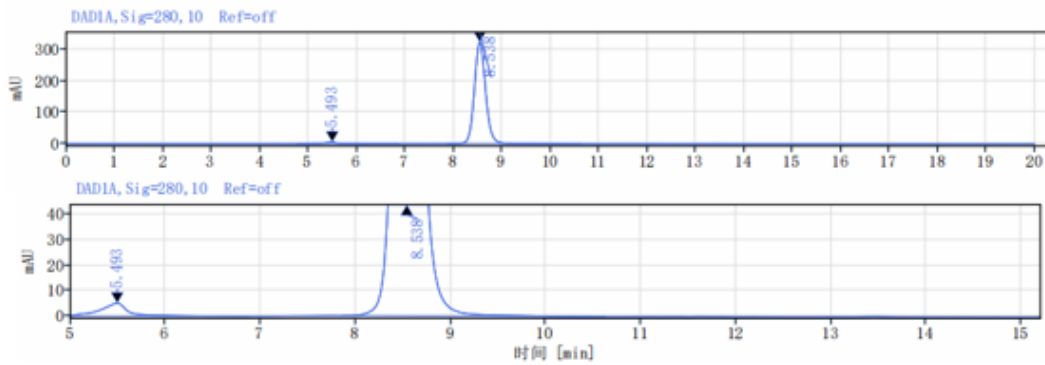
Data Examples

SDS-PAGE



On SDS-PAGE under reducing (R)/non-reducing(N-R) condition. The gel was stained overnight with Coomassie Blue. The purity of the protein is greater than 95%.

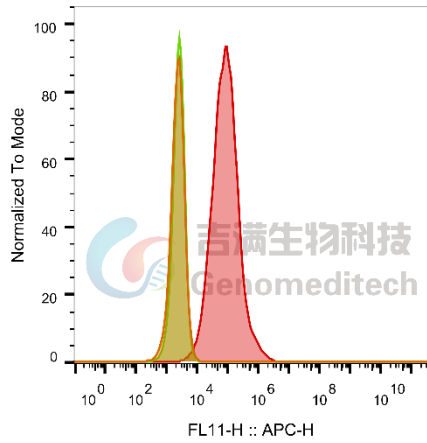
SEC-HPLC



The purity of this product is more than 95% verified by SEC-HPLC

Flow cytometry

H_STEAP2(ECD) CHO-K1 Cell Line (Catalog # GM-C37055) was stained with Anti-STEAP2 hlgG1 Reference Antibody (AZD0754) (Catalog # GM-87756MAB) or isotype control antibody, followed by anti-Human IgG APC-conjugated Secondary Antibody.

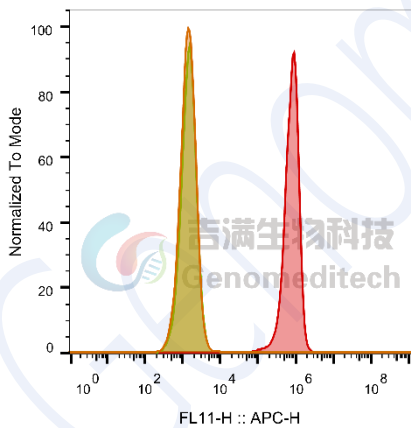


SampleID	Geometric Mean : FL11-H
CHO-K1 anti-STEAP2+APC-2nd Ab	2340
CHO-K1 H_STEAP2(ECD) H_IgG+APC-2nd Ab	2546
CHO-K1 H_STEAP2(ECD) anti-STEAP2 +APC-2nd Ab	85111

Fig. FACS

Flow cytometry

Mouse_STEAP2(ECD) HEK-293 Cell Line (Catalog # GM-C38095) was stained with Anti-STEAP2 hlgG1 Reference Antibody (AZD0754) (Catalog # GM-87756MAB) or isotype control antibody, followed by anti-Human IgG APC-conjugated Secondary Antibody.



SampleID	Geometric Mean : FL11-H
HEK-293 anti-STEAP2+APC-2nd Ab	1407
HEK-293 Mouse_STEAP2(ECD) H_IgG+APC-2nd Ab	1468
HEK-293 Mouse_STEAP2(ECD) anti-STEAP2+APC-2nd Ab	7.48E5

Fig. FACS