

Anti-SLAMF6 hIgG1 Antibody (hF6-21)

Product information

GM-88649AB-10	10 µg
GM-88649AB-100	100 µg
GM-88649AB-1000	1 mg

Antibody Information

Species Reactivity	Human
Clone	hF6-21
Source/Isotype	Human IgG1(LALAPG), Kappa
Application	Flow Cytometry; Bioactivity-ELISA
Target	Detects SLAMF6
Gene	SLAMF6
Other Names	NTB-A, Ly108, NK-T-B-antigen, CD352, KALI
Gene ID	114836 (Human)
Background	Anti-SLAMF6 antibodies represent a breakthrough in cancer immunotherapy. Recent studies reveal that SLAMF6 acts as a novel immune checkpoint triggered by homotypic cis-interactions on T cells, inhibiting T cell activation and anti-tumor immunity independently of SLAMF6 expression on tumor cells. Monoclonal antibodies that block SLAMF6-SLAMF6 interactions significantly enhance human T cell activation, reduce exhausted T cell proportions, and effectively suppress tumor growth in humanized mouse models. Given that aberrant SLAMF6 expression also serves as a novel immune escape mechanism in approximately 60% of acute myeloid leukemia (AML) cases, this antibody strategy offers a promising therapeutic option for patients resistant to PD-1/PD-L1 blockade, positioning it as a next-generation cancer immunotherapy candidate. Furthermore, anti-SLAMF6 antibodies hold significant tool value and clinical translational potential for studying the complex regulatory functions of SLAMF6 in autoimmune diseases such as systemic lupus erythematosus (SLE) and in viral immune responses.
Storage	Store at 2-8°C short term (1-2 weeks). Store at ≤ -20°C long term. Avoid repeated freeze-thaw.
Formulation	Supplied as a 0.2 µm filtered solution of PBS, pH7.2-7.4.
Endotoxin	< 1 EU/mg, determined by LAL gel clotting assay

Version:3.1

Data Examples

Flow Cytometry

H_SLAMF6 CHO-K1 Cell Line (Catalog # GM-C45939) was stained with Anti-SLAMF6 hlgG1 Antibody (hF6-21) (Catalog # GM-88649AB) or isotype control antibody, followed by anti-Human IgG APC-conjugated Secondary Antibody.

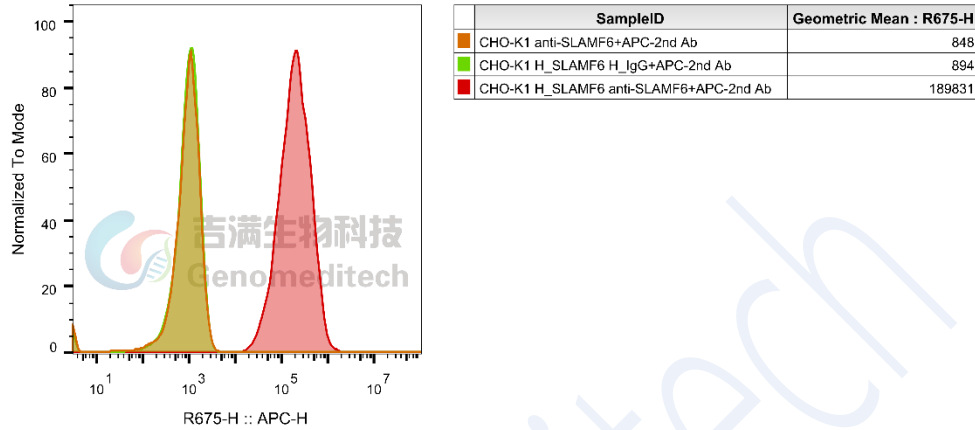


Fig. FACS

Flow Cytometry

H_SLAMF6 HEK-293 Cell Line (Catalog # GM-C45940) was stained with Anti-SLAMF6 hlgG1 Antibody (hF6-21) (Catalog # GM-88649AB) or isotype control antibody, followed by anti-Human IgG APC-conjugated Secondary Antibody.

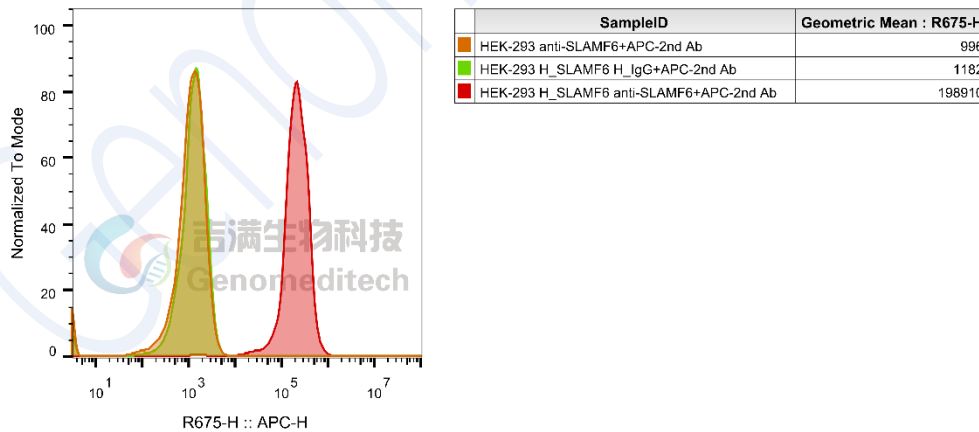


Fig. FACS

Bioactivity-ELISA

Human SLAMF6 Protein; His Tag (Catalog # GM-88713RP) was immobilized at 2 µg/ml (100 µL/well). Increasing concentrations of Anti-SLAMF6 hIgG1 Antibody (hF6-21) (Catalog # GM-88649AB) were added.

Bioactivity-ELISA

0.2 µg Human SLAMF6 Protein; His Tag of per well

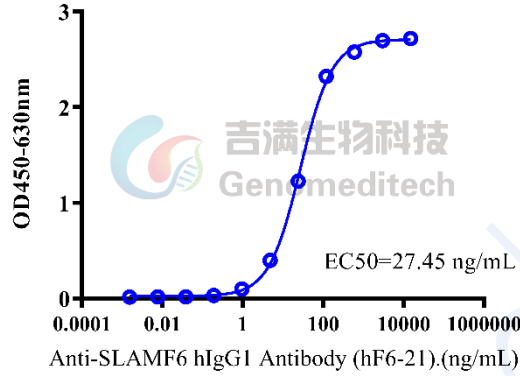


Fig. ELISA

Bioactivity-ELISA

Human SLAMF6 Protein; hFc Tag (Catalog # GM-88714RP) was immobilized at 2 µg/ml (100 µL/well). Increasing concentrations of Anti-SLAMF6 hIgG1 Antibody (hF6-21) (Catalog # GM-88649AB) were added.

Bioactivity-ELISA

0.2 µg Human SLAMF6 Protein; hFc Tag of per well

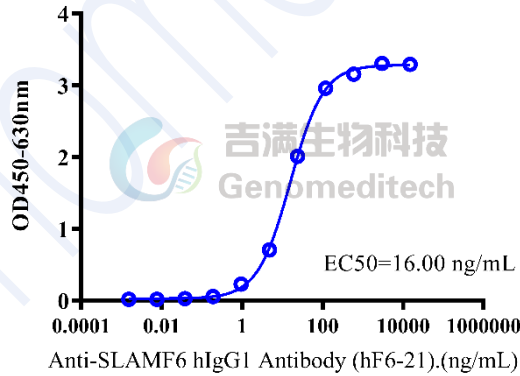


Fig. ELISA