

Human TSLP Protein; His Tag

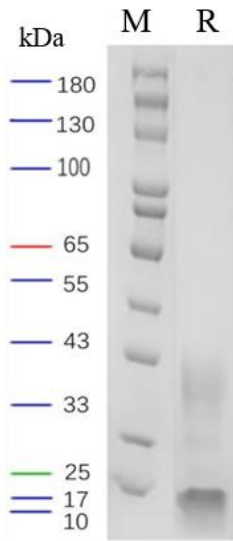
Product Information

Product Name	Human TSLP Protein; His Tag
Storage temp.	Store at $\leq -70^{\circ}\text{C}$, stable for 6 months after receipt. Recommend to aliquot the protein into smaller quantities for optimal storage. Please minimize freeze-thaw cycles.
Catalog# / Size	GM-87654RP-100 / 100 μg GM-87654RP-1000 / 1 mg

Protein Information

Alternative Names	Thymic stromal lymphopoietin
Source	Human TSLP Protein; His Tag (GM-87654RP) is expressed from human 293 cells (HEK-293). It contains AA Tyr 29 - Gln 159 (Accession # Q969D9-1). This protein carries a His tag at the C-terminus.
Purity	> 90% as determined by SDS-PAGE
Endotoxin	< 1 EU/ μg , determined by LAL gel clotting assay
Predicted Mol Mass	15.1 KDa
Formulation	Supplied as a 0.2 μm filtered solution of PBS, pH7.4.
Description	<p>TSLP protein (Thymic stromal lymphopoietin) is a cytokine protein mainly produced by epithelial cells, immune cells, and other cells. It plays an important role in immune regulation and inflammation processes.</p> <p>TSLP protein has various functions in the immune system. It can promote the maturation and activation of dendritic cells, thereby triggering immune responses of T cells and B cells. Additionally, TSLP protein can also affect the activity of macrophages, mast cells, and other immune cells, regulating inflammatory responses and immune responses.</p> <p>TSLP protein plays an important role in allergic diseases and autoimmune diseases. It is considered an important regulatory factor in allergic diseases (such as asthma, eczema) and autoimmune diseases (such as rheumatoid arthritis, inflammatory bowel disease). Overactivation of TSLP is often closely related to the occurrence and development of these diseases.</p>

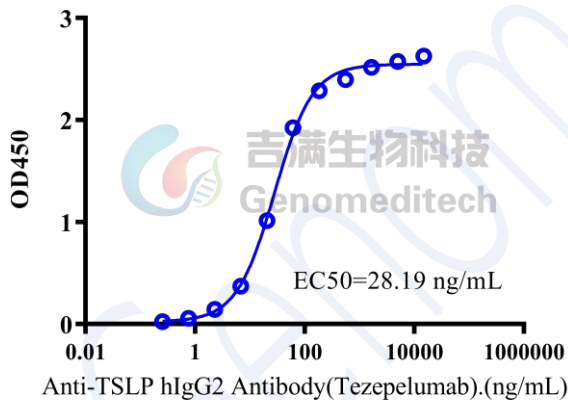
SDS-PAGE



On SDS-PAGE under reducing (R) condition. The gel was stained overnight with Coomassie Blue. The purity of the protein is greater than 90%.

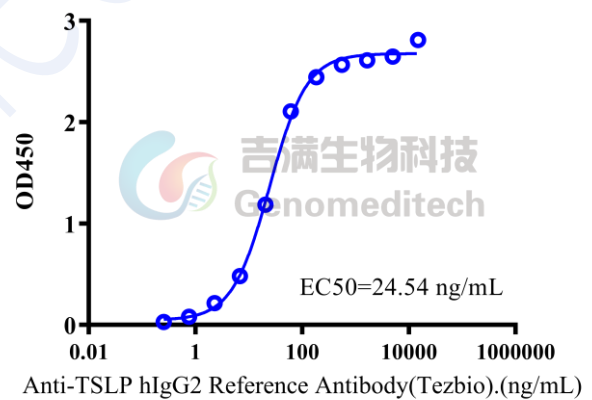
Bioactivity-ELISA

Human TSLP Protein; His Tag, ELISA
 0.1 μg Human TSLP Protein; His Tag of per well



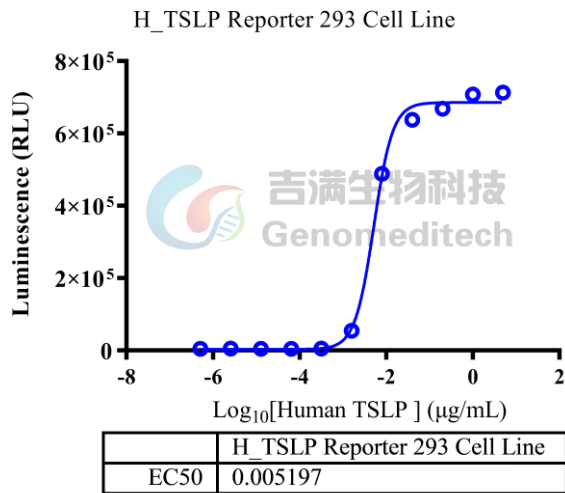
Human TSLP Protein; His Tag (Catalog # GM-87654RP) was immobilized at 1 $\mu\text{g}/\text{ml}$ (100 $\mu\text{L}/\text{well}$). Increasing concentrations of Anti-TSLP hIgG2 Antibody (Tezepelumab) (Catalog # GM-51675AB) were added.

Bioactivity-ELISA
 0.1 μg Human TSLP Protein; His Tag of per well

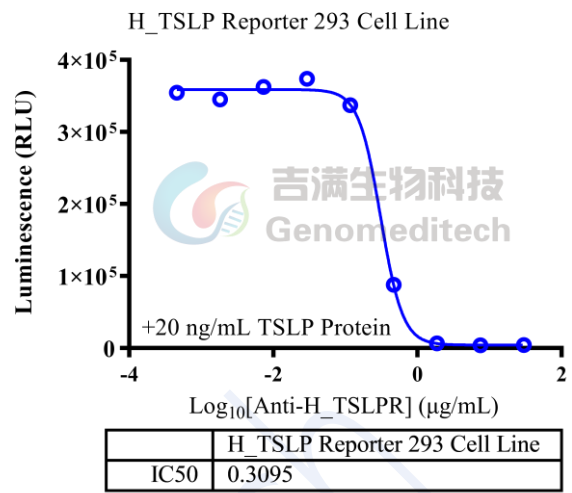


Human TSLP Protein; His Tag (Catalog # GM-87654RP) was immobilized at 1 $\mu\text{g}/\text{ml}$ (100 $\mu\text{L}/\text{well}$). Increasing concentrations of Anti-TSLP hIgG2 Reference Antibody (Tezbio) (Catalog # GM-87344MAB) were added.

Bioactivity-CELL BASE



Human TSLP Protein; His Tag (Catalog # GM-87654RP) was added into H_TSLP Reporter 293 Cell Line (Catalog # GM-C26459) and stimulates related signals.



The stimulate effect of 20 ng/mL Human TSLP Protein; His Tag (Catalog # GM-87654RP) for H_TSLP Reporter 293 Cell Line (Catalog # GM-C26459) was inhibited by increasing concentration of Anti-H_TSLPR hIgG1 Antibody (Cat. GM-31018AB).