

Anti-CD37 hlgG1 Antibody (Naratuximab)

Product information

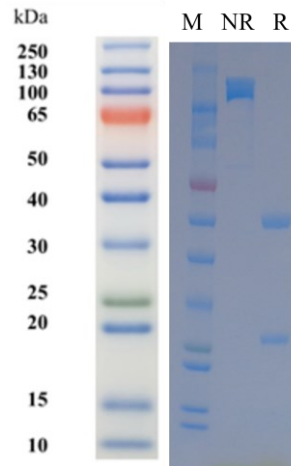
GM-88391AB-10	10 µg
GM-88391AB-100	100 µg
GM-88391AB-1000	1 mg

Antibody Information

Species Reactivity	Human
Clone	Naratuximab
Source/Isotype	Human IgG1, Kappa
Application	/
Target	Detects CD37
Gene	CD37
Other Names	GP52-40, TSPAN26
Gene ID	951 (Human)
Background	<p>Naratuximab is an antibody-drug conjugate targeting CD37, which consists of a humanized anti-CD37 antibody coupled to the cytotoxic drug DM1 via a non-cleavable linker, and a non-cleavable linker, it is mainly used to treat relapsed/refractory b-cell non-hodgkin lymphoma (B-nhl) , especially diffuse large b-cell lymphoma (DLBCL) . Its mechanism of action is: by specifically binding to CD37(a transmembrane protein highly expressed in b-cell malignancies) , releasing DM1 after endocytosis of ADC, inhibiting microtubule polymerization, leading to tumor cell cycle arrest and apoptosis, and inducing apoptosis, at the same time, it reduces the non-specific toxicity to normal tissues. The drug also shows potential in other B-NHL subtypes such as mantle cell lymphoma and follicular lymphoma, as well as chronic lymphocytic leukemia (CLL) and acute myeloid leukemia (AML) , phase II clinical trials have been conducted in many countries around the world. As an innovative ADC targeting CD37, NARATUXIMAB offers a new therapeutic option for patients with relapsed/refractory b-cell malignancies through precision targeting and efficient load delivery, providing a promising strategy for the treatment of patients with recurrent/refractory b-cell malignancies, in particular, it is of great value in addressing the needs of patients who are resistant to traditional treatment and can not tolerate high-intensity treatment.</p>
Storage	Store at 2-8°C short term (1-2 weeks).Store at ≤ -20°C long term. Avoid repeated freeze-thaw.
Formulation	Supplied as a 0.2 µm filtered solution of PBS, pH7.2-7.4.
Endotoxin	< 1 EU/mg, determined by LAL gel clotting assay

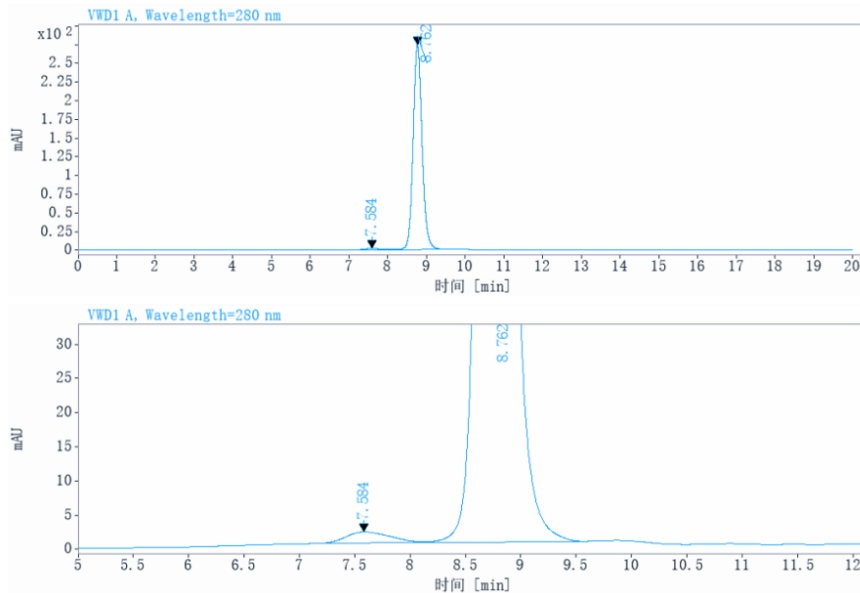
Version:3.1

SDS-PAGE



On SDS-PAGE under reducing (R)/non-reducing(N-R) condition. The gel was stained overnight with Coomassie Blue. The purity of the protein is greater than 95%.

SEC-HPLC



The purity of this product is more than 90% verified by SEC-HPLC.