

Anti-CD3E×DLL3 hlgG1 Bispecific Antibody(Tarlabio)

Product Information

Product Name	Anti-CD3E×DLL3 hlgG1 Bispecific Antibody(Tarlabio)
Storage temp.	Store at 2-8°C short term (1-2 weeks). Store at ≤ -20°C long term. Avoid repeated freeze-thaw.
Catalog# / Size	GM-88371MAB-1mg / 1 mg GM-88371MAB-5mg / 5 mg GM-88371MAB-25mg / 5 mg*5 vials GM-88371MAB-50mg / 50 mg GM-88371MAB-100mg / 50 mg*2 vials

Antibody Information

Expression System	CHO
Aggregation	< 5% as determined by SEC-HPLC
Purity	> 95% as determined by SDS-PAGE
Endotoxin	< 1 EU/mg, determined by LAL gel clotting assay
Sterility	0.22 µm Filtered
Target	CD3E、DLL3
Clone	Tarlabio
Alternative Names	CD3E: FLJ18683, T3E, TCRE DLL3: Delta3, delta-like protein 3, SCDO1
Source/Isotype	Human IgG1 Fc (R292C, N297G, V302C, D356E, L358M, G446-K447del; R292C, N297G, V302C, D356E, L358M)
Application	Flow Cytometry; Bioactivity-ELISA
Gene ID	CD3E: 916 (Human) DLL3: 10683 (Human)
Description	The research significance of the Anti-CD3E×DLL3 bispecific antibody lies in its potential to target DLL3, a tumor-associated antigen highly expressed on small cell lung cancer and other neuroendocrine tumors but minimally in normal tissues. This antibody simultaneously binds CD3E on T cells and DLL3 on tumor cells, redirecting T cells to the tumor site and activating their cytotoxic activity. This approach offers precise immunotherapy with enhanced antitumor efficacy, reduced off-target toxicity, and the ability to overcome resistance to existing immune

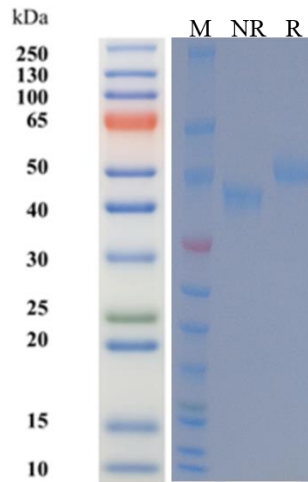
checkpoint inhibitors. Thus, the Anti-CD3E×DLL3 antibody represents a novel targeted immunotherapy for DLL3-positive solid tumors with promising clinical translation potential.

Formulation

Phosphate-buffered solution, pH 7.2-7.4.

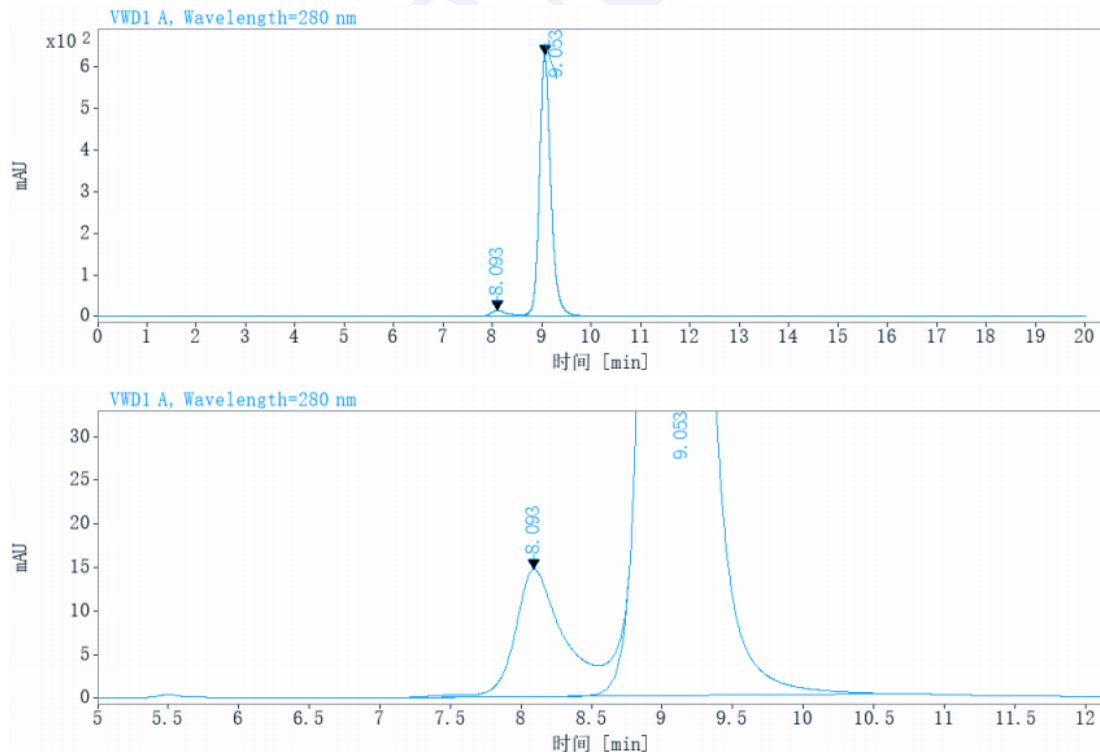
Data Examples

SDS-PAGE



On SDS-PAGE under reducing (R)/non-reducing(N-R) condition. The gel was stained overnight with Coomassie Blue. The purity of the protein is greater than 95%.

SEC-HPLC



The purity of this product is more than 95% verified by SEC-HPLC

Flow Cytometry

H_CD3 HEK-293 Cell Line (Catalog # GM-C30877) or H_DLL3 HEK-293 Cell Line (Catalog # GM-C12896) was stained with Anti-CD3E×DLL3 hlgG1 Bispecific Antibody(Tarlabio) (Catalog # GM-88371MAB), followed by anti-Human IgG APC-conjugated Secondary Antibody.

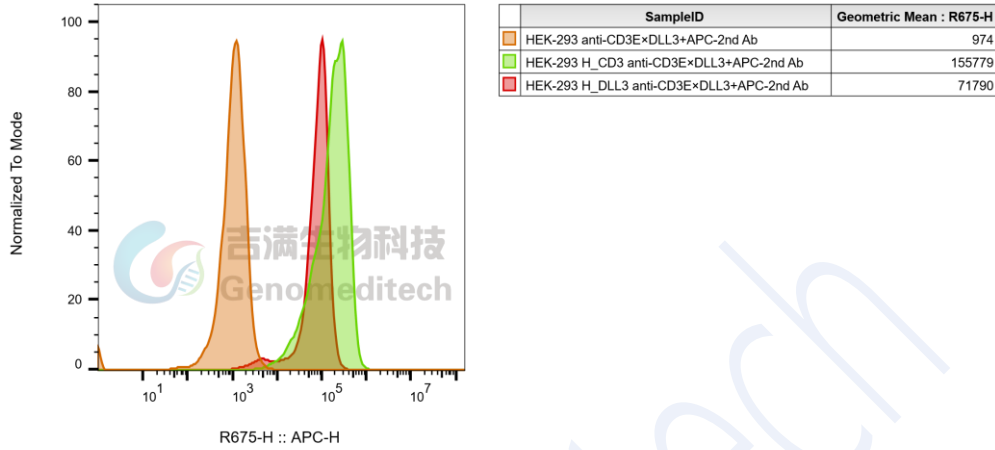


Fig. FACS

Bioactivity-ELISA

Human CD3E Protein; His Tag (Catalog # GM-87533RP) was immobilized at 2 µg/ml (100 µL/well). Increasing concentrations of Anti-CD3E×DLL3 hlgG1 Bispecific Antibody(Tarlabio) (Catalog # GM-88371MAB) were added.

Bioactivity-ELISA

0.2 µg Human CD3E Protein; His Tag of per well

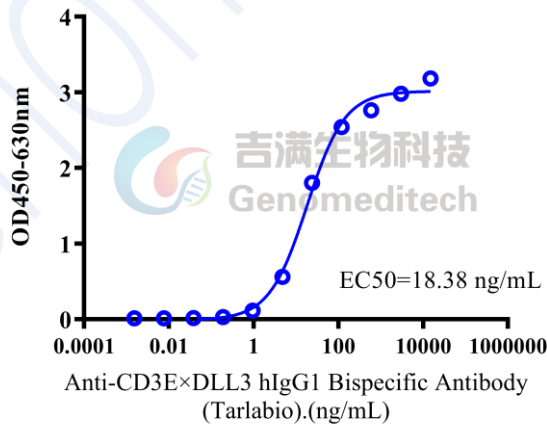


Fig. ELISA