

Anti-CALCR hIgG1 Antibody(CN40)

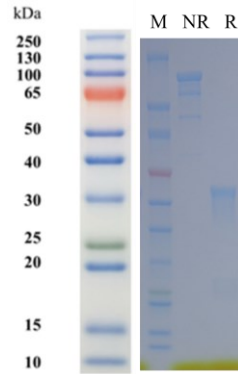
Product information

GM-88221AB-10	10 µg
GM-88221AB-100	100 µg
GM-88221AB-1000	1 mg

Antibody Information

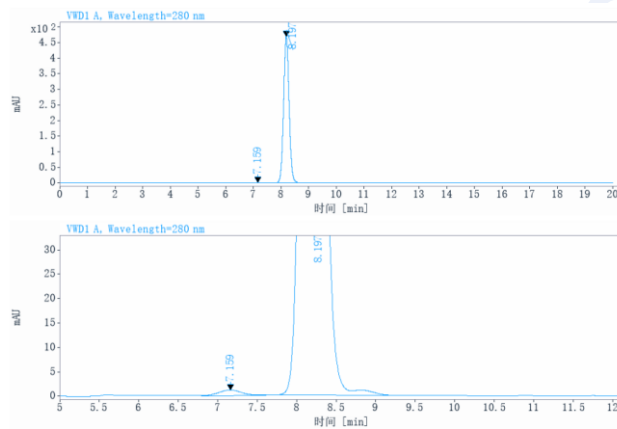
Species Reactivity	Human
Clone	CN40
Source/Isotype	Human IgG1(REEM, K447del), Lambda2
Application	/
Target	Detects CALCR
Gene	CALCR
Other Names	CRT, CT-R, CTR, CTR1
Gene ID	799 (Human)
Background	<p>The CALCR gene encodes a calcitonin high-affinity receptor belonging to the g-protein-coupled receptor family and is located on human chromosome 7(7q21.3), which is associated with a calcitonin receptor, it plays a central role in bone metabolism, tumorigenesis and neural regulation by regulating calcium homeostasis, inhibiting osteoclast activity and participating in adenylyl cyclase signaling pathway. Non-synonymous single-nucleotide polymorphism affects protein stability and may be used as a biomarker. The techniques of immunohistochemistry, CRISPR knockout, lentiviral overexpression and bioinformatics were used in this study, to explore its potential in cancer treatment, bone healing (and autoimmune diseases, a number of clinical trials have verified the safety and effectiveness of its targeted drugs, providing key molecular targets for precision medicine.</p>
Storage	Store at 2-8°C short term (1-2 weeks). Store at ≤ -20°C long term. Avoid repeated freeze-thaw.
Formulation	Supplied as a 0.2 µm filtered solution of PBS, pH7.2-7.4.
Endotoxin	< 1 EU/mg, determined by LAL gel clotting assay

SDS-PAGE



On SDS-PAGE under reducing (R)/non-reducing(N-R) condition. The gel was stained overnight with Coomassie Blue. The purity of the protein is greater than 95%.

SEC-HPLC



The purity of this product is more than 90% verified by SEC-HPLC.