

Human NCR3LG1(B7-H6) Protein; hFc Tag

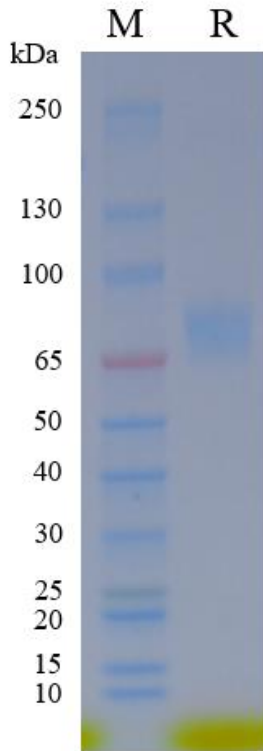
Product Information

Product Name	Human NCR3LG1(B7-H6) Protein; hFc Tag
Storage temp	Store at $\leq -70^{\circ}\text{C}$, stable for 6 months after receipt. Recommend to aliquot the protein into smaller quantities for optimal storage. Please minimize freeze-thaw cycles.
Catalog# / Size	GM-87648RP-100 / 100 μg GM-87648RP-1000 / 1 mg

Protein Information

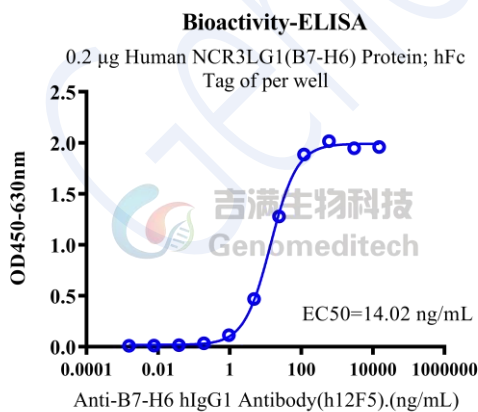
Alternative Names	B7 Homolog 6
Source	Human NCR3LG1(B7-H6) Protein; hFc Tag (GM-87648RP) is expressed from human 293 cells (HEK-293). It contains AA Asp 25 - Ser 262 (Accession # Q68D85-1). This protein carries a hFc tag at the C-terminus.
Purity	> 95% as determined by SDS-PAGE
Endotoxin	< 1 EU/ μg , determined by LAL gel clotting assay
Predicted Mol Mass	52.6 KDa
Formulation	Supplied as a 0.2 μm filtered solution of PBS, pH7.2-7.4.
Description	<p>B7-H6 protein is a co-stimulatory molecule that belongs to the B7 family. It is encoded by the NCR3LG1 gene and is a protein associated with the human immune system. B7-H6 protein was initially discovered in human tumor cells and later detected in other tissues and cells.</p> <p>B7-H6 protein regulates the activity of NK cells (natural killer cells) by binding to the NKP30 receptor on the surface of NK cells. NK cells are an important type of lymphocyte with the ability to directly kill tumor cells and infected cells, making them crucial members of the immune system.</p> <p>Research indicates that B7-H6 protein plays a significant role in regulating the activity of NK cells, promoting cytotoxicity, and modulating immune responses. Additionally, the expression of B7-H6 protein is associated with tumor development and immune evasion, making it a potential target for immunotherapy.</p>

SDS-PAGE



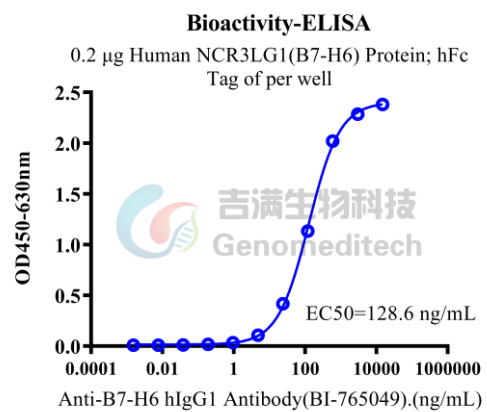
On SDS-PAGE under reducing (R) condition. The gel was stained overnight with Coomassie Blue. The purity of the protein is greater than 95%.

Bioactivity-ELISA



Human NCR3LG1(B7-H6) Protein; hFc Tag (Catalog # GM-87648RP) was immobilized at 2 µg/ml (100 µL/well).

Increasing concentrations of Anti-B7-H6 hIgG1 Antibody (h12F5) (Catalog # GM-86675AB) were added.



Human NCR3LG1(B7-H6) Protein; hFc Tag (Catalog # GM-87648RP) was immobilized at 2 µg/ml (100 µL/well).

Increasing concentrations of Anti-B7-H6 hIgG1 Antibody (BI-765049) (Catalog # GM-86750AB) were added.

Version:4.0