

## Anti-CD30L hlgG1 Antibody(41683)

### Product information

GM-88403AB-10	10 µg
GM-88403AB-100	100 µg
GM-88403AB-1000	1 mg

### Antibody Information

Species Reactivity	Human; Cynomolgus
Clone	41683
Source/Isotype	Human IgG1(M252Y, S254T, T256E, R292C, N297G, V302C, D356E, L358M, L234A, L235A, P329G), Kappa
Application	Flow Cytometry; Bioactivity-ELISA
Specificity	Detects CD30L
Gene	CD30L
Other Names	CD30-L,CD153,TNFSF8,CD30L,CD30LG,CD153 antigen,CD30 antigen ligand,CD30 Ligand
Gene ID	944 (human); 102143966 (Cynomolgus)
Background	CD30L gene (encoding CD153/TNFSF8 protein) is a key member of the tumor necrosis factors superfamily. As a ligand of CD30(TNFRSF8), it plays a dual role in immune regulation and tumorigenesis. The type II transmembrane glycoprotein encoded by this gene is mainly expressed on the surface of activated T cells, B cells, macrophages and some tumor cells, and activates NF- $\kappa$ B, MAPK and other signaling pathways by binding to CD30, it regulates lymphocyte activation, proliferation, apoptosis and immunoglobulin class switching. Under normal physiological conditions, CD30L is involved in T-B cell interaction and immune surveillance; under pathological conditions, CD30L is involved in T-B cell interaction and immune surveillance, its abnormal expression is closely related to Hodgkin's lymphoma (HL), anaplastic large cell lymphoma (ALCL), adult T cell leukemia/lymphoma (ATL), diffuse large B cell lymphoma (DLBCL) and other lymphomas and autoimmune diseases.
Storage	Store at 2-8°C short term (1-2 weeks).Store at $\leq$ -20°C long term. Avoid repeated freeze-thaw.
Formulation	Supplied as a 0.2 µm filtered solution of PBS, pH7.2-7.4.
Endotoxin	< 1 EU/mg, determined by LAL gel clotting assay

Version:3.1

## Data Examples

### Flow Cytometry

H\_TNFSF8(CD30L) HEK-293 Cell Line (Catalog # GM-C43848) was stained with Anti-CD30L hlgG1 Antibody(41683) (Catalog # GM-88403AB) or isotype control antibody, followed by anti-Human IgG APC-conjugated Secondary Antibody.

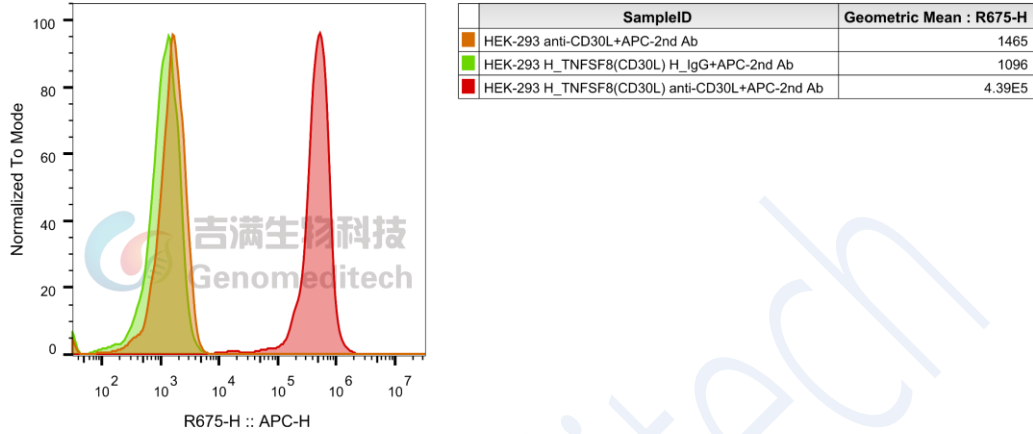


Fig. FACS

### Bioactivity-ELISA

Human TNFSF8(CD30L) Protein; His Tag (Catalog # GM-88432RP) was immobilized at 2 µg/ml (100 µL/well). Increasing concentrations of Anti-CD30L hlgG1 Antibody(41683) (Catalog # GM-88403AB) were added.

#### Bioactivity-ELISA

0.2 µg Human TNFSF8(CD30L) Protein; His Tag of per well

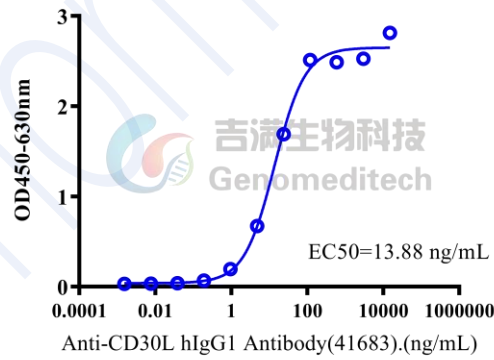


Fig. ELISA

Bioactivity-ELISA

Cynomolgus TNFSF8(CD30L) Protein; hFc Tag (Catalog # GM-88435RP) was immobilized at 2 µg/ml (100 µL/well). Increasing concentrations of Anti-CD30L hIgG1 Antibody(41683) (Catalog # GM-88403AB) were added.

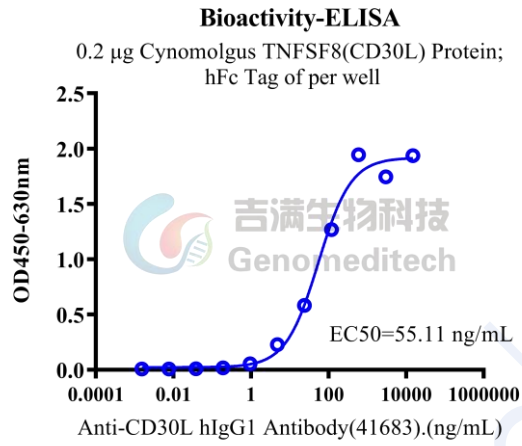


Fig. ELISA