

Anti-IL1RAP hIgG1 Antibody (24G3_17C5)

Product information

GM-88261AB-10	10 µg
GM-88261AB-100	100 µg
GM-88261AB-1000	1 mg

Antibody Information

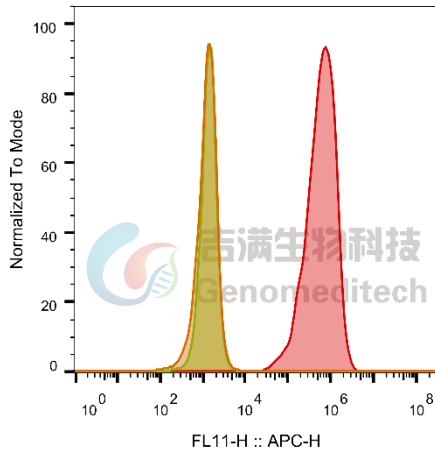
Species Reactivity	Human; Rat; Mouse
Clone	24G3_17C5
Source/Isotype	Human IgG1(KEEM), kappa
Application	Flow Cytometry; Bioactivity-ELISA
Target	Detects IL1RAP
Gene	IL1RAP
Other Names	C3orf13, IL-1RAcP, IL1R3
Gene ID	3556(Human); 25466 (Rat); 16180(Mouse)
Background	<p>IL1RAP (Interleukin 1 Receptor Accessory Protein), also known as IL-1R Accessory Protein, belongs to the IL-1 receptor accessory protein family and serves as an important auxiliary protein for IL-1 receptor signaling. IL1RAP forms a receptor complex with IL-1RI (IL-1R1) and other IL-1 family receptors, participating in the signal transduction of ligands such as IL-1β, triggering downstream pathways such as NF-κB and MAPK to regulate inflammatory responses, immune cell activation, and the secretion of inflammatory cytokines. Expression and function of IL1RAP vary by cell type and are tissue-specific; signaling strength can be modulated by alternative splicing variants or post-translational modifications. IL1RAP plays a key role in a variety of inflammatory diseases, including rheumatoid arthritis, inflammatory bowel disease, psoriasis, and sepsis, by regulating the IL-1 signaling axis to amplify inflammation. Changes in gene expression levels, mutations, or the assembly of receptor complexes in monocytes/macrophages and other immune cells may influence disease susceptibility and progression.</p>
Storage	Store at 2-8°C short term (1-2 weeks).Store at \leq -20°C long term. Avoid repeated freeze-thaw.
Formulation	Phosphate-buffered solution, pH 7.2-7.4.
Endotoxin	< 1 EU/mg, determined by LAL gel clotting assay

Version:3.1

Data Examples

Flow Cytometry

Rat_IL1RAP HEK-293 Cell Line (Catalog # GM-C42471) was stained with Anti-IL1RAP hlgG1 Antibody (24G3_17C5) (Catalog # GM-88261AB) or isotype control antibody, followed by anti-Human IgG APC-conjugated Secondary Antibody.

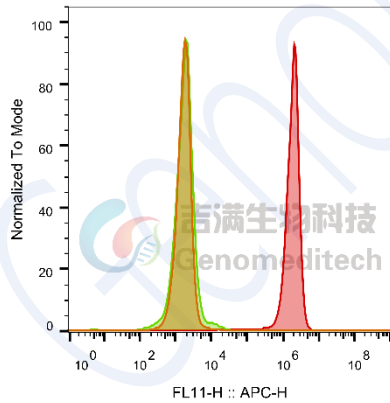


SampleID	Geometric Mean : FL11-H
HEK-293 anti-IL1RAP+APC-2nd Ab	1245
HEK-293 Rat_IL1RAP H_IgG+APC-2nd Ab	1394
HEK-293 Rat_IL1RAP anti-IL1RAP+APC-2nd Ab	5.69E5

Fig. FACS

Flow Cytometry

Mouse_IL1RAP HEK-293 Cell Line (Catalog # GM-C42417) was stained with Anti-IL1RAP hlgG1 Antibody (24G3_17C5) (Catalog # GM-88261AB) or isotype control antibody, followed by anti-Human IgG APC-conjugated Secondary Antibody.



SampleID	Geometric Mean : FL11-H
HEK-293 anti-IL1RAP+APC-2nd Ab	1689
HEK-293 Mouse_IL1RAP H_IgG+APC-2nd Ab	1722
HEK-293 Mouse_IL1RAP anti-IL1RAP+APC-2nd Ab	1.59E6

Fig. FACS

Bioactivity-ELISA

Human IL-1RAP Protein; His Tag (Catalog # GM-88257RP) was immobilized at 2 µg/ml (100 µL/well). Increasing concentrations of Anti-IL1RAP hIgG1 Antibody (24G3_17C5) (Catalog # GM-88261AB) were added.

Bioactivity-ELISA

0.2 µg Human IL-1RAP Protein; His Tag of per well

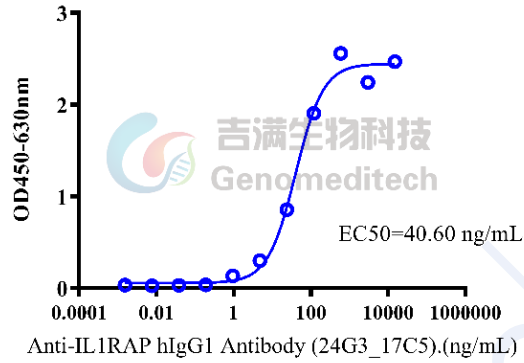


Fig. ELISA