

Anti-GPRC5D hIgG1 Antibody(80A8)

Product information

GM-88418AB-10	10 µg
GM-88418AB-100	100 µg
GM-88418AB-1000	1 mg

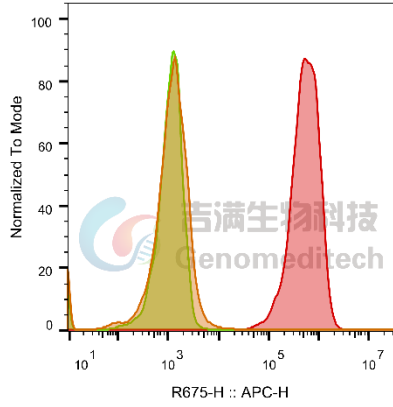
Antibody Information

Species Reactivity	Human
Clone	80A8
Source/Isotype	Human IgG1(K214R,D256E,L358M), Kappa
Application	Flow cytometry
Specificity	Detects GPRC5D
Gene	GPRC5D
Other Names	G-protein coupled receptor family C group 5 member D
Gene ID	55507 (human)
Background	<p>GPRC5D (g protein-coupled receptor class C Group 5member D) is a g protein-coupled orphan receptor that belongs to the 7th transmembrane protein. Expression is limited in normal tissues, usually limited to hair follicles, but specifically high in MM cells. Studies have found that GPRC5D mRNA expression correlates with plasma cell burden and gene aberrations. GPRC5D activates multiple signaling pathways, including those for cell proliferation, survival, and migration, to promote the growth and proliferation of MM cells. GPRC5D has been shown to be expressed on the surface of myeloma cells independently of BCMA and has been identified as an alternative immunotherapy target antigen for this indication. Therefore, targeted therapy against GPRC5D has emerged as a new direction for MM treatment.</p>
Storage	Store at 2-8°C short term (1-2 weeks).Store at ≤ -20°C long term. Avoid repeated freeze-thaw.
Formulation	Supplied as a 0.2 µm filtered solution of PBS, pH7.2-7.4.
Endotoxin	< 1 EU/mg, determined by LAL gel clotting assay

Version:3.2

Flow cytometry

H_GPRC5D CHO-K1 Cell Line (Catalog # GM-C03857) was stained with Anti-GPRC5D hlgG1 Antibody(80A8) (Catalog # GM-88418AB) or isotype control antibody, followed by anti-Human IgG APC-conjugated Secondary Antibody.



SampleID	Geometric Mean : R675-H
CHO-K1 anti-GPEC5D+APC-2nd Ab	1042
CHO-K1 H_IgG+APC-2nd Ab	972
CHO-K1 H_GPRC5D anti-GPEC5D+APC-2nd Ab	4.96E5

Fig. FACS