

# Human NCR3(NKP30) Protein; hFc Tag

## Product Information

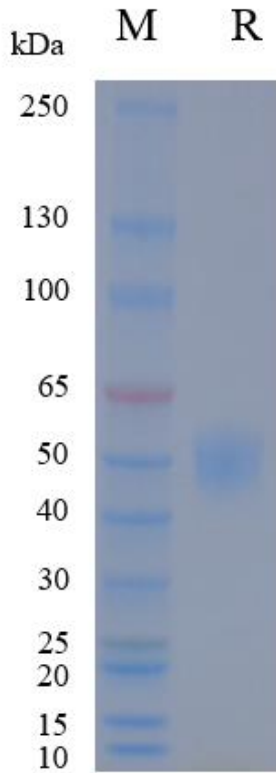
<b>Product Name</b>	Human NCR3(NKP30) Protein; hFc Tag
<b>Storage temp</b>	Store at $\leq -70^{\circ}\text{C}$ , stable for 6 months after receipt. Recommend to aliquot the protein into smaller quantities for optimal storage. Please minimize freeze-thaw cycles.
<b>Catalog# / Size</b>	<b>GM-87645RP-100 / 100 <math>\mu\text{g}</math></b> <b>GM-87645RP-1000 / 1 mg</b>

## Protein Information

<b>Alternative Names</b>	CD337, 1C7, LY117, MALS
<b>Source</b>	Human NCR3(NKP30) Protein; hFc Tag (GM-87645RP) is expressed from human 293 cells (HEK-293). It contains AA Leu 19 - Gly 135 (Accession # AAH52582). This protein carries a hFc tag at the C-terminus.
<b>Purity</b>	> 95% as determined by SDS-PAGE
<b>Endotoxin</b>	< 1 EU/ $\mu\text{g}$ , determined by LAL gel clotting assay
<b>Predicted Mol Mass</b>	38.8 KDa
<b>Formulation</b>	Supplied as a 0.2 $\mu\text{m}$ filtered solution of PBS, pH7.2-7.4.
<b>Description</b>	<p>NCR3 protein, also known as NKp30, is a member of the natural cytotoxicity receptor (NCR) family. NCR3 is expressed on human NK cells and certain subsets of T cells. It is an important cell surface protein that plays a key role in regulating cytotoxicity and immune responses.</p> <p>NCR3 protein can bind to ligands, triggering cell signaling pathways that prompt natural killer cells to launch immune attacks against pathogens, abnormal cells, and tumor cells. Through the recognition receptor NCR3, NK cells can identify tumor cells with anaerobic metabolism, cells infected with viruses, and other abnormal cells, initiating cytotoxic responses to kill them.</p> <p>The role of NCR3 protein in the immune system is significant, contributing to the maintenance of immune balance, clearance of abnormal cells, and defense against infections. Studying the function and regulatory mechanisms of NCR3 protein helps deepen our understanding of the immune response mechanisms of immune cells, providing important theoretical basis for the development of disease treatments and immunotherapies.</p>

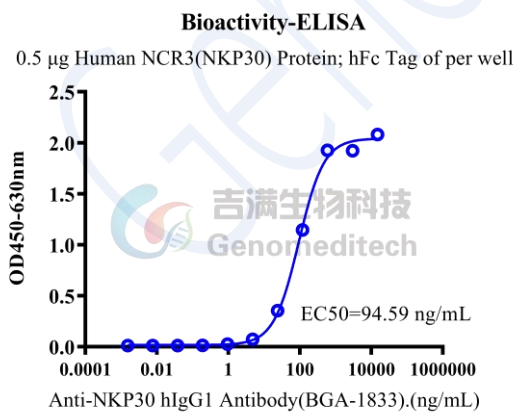
Version:4.0

## SDS-PAGE

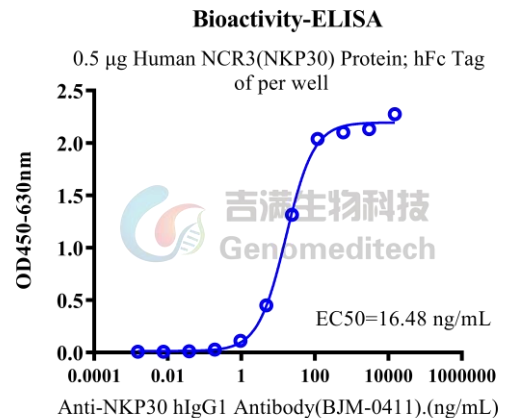


On SDS-PAGE under reducing (R) condition. The gel was stained overnight with Coomassie Blue. The purity of the protein is greater than 95%.

## Bioactivity-ELISA



Human NCR3(NKP30) Protein; hFc Tag (Catalog # GM-87645RP) was immobilized at 5  $\mu$ g/ml (100  $\mu$ L/well). Increasing concentrations of Anti-NKP30 hIgG1 Antibody (BGA-1833) (Catalog # GM-49311AB) were added.



Human NCR3(NKP30) Protein; hFc Tag (Catalog # GM-87645RP) was immobilized at 5  $\mu$ g/ml (100  $\mu$ L/well). Increasing concentrations of Anti-NKP30 hIgG1 Antibody (BJM-0411) (Catalog # GM-59269AB) were added.

Version:4.0